

Using your PC to access a remote M90 via GSM

You can use a PC running U90 Ladder to access a remote M90 OPLC for programming and maintenance via GSM networks.

To do this using the modems which are supplied with the M90 GSM Modem Kit:

- Connect your M90 to the GSM modem according to the instructions supplied with the M90 GSM Modem Kit.
- Connect your PC to the GSM modem as shown in Figure 1 below.
- Select the modem type as shown on page 1, Configuring your PC's modem.
- Configure U90 Ladder's modem initialization commands, as described on page 2.
- Dial the remote M90 modem from your PC as shown in Figure 6 on page 5.

Both GSM modems must contain SIM cards capable of data transfer. Check with your SIM card supplier to see if your SIM card is capable of data transfer.

Note that **only** 3V SIM cards can be used with the GSM modem supplied with the M90 GSM Modem Kit.

Connecting the GSM modem

1. Connect the GSM MODEM to your PC as shown in the figure below.

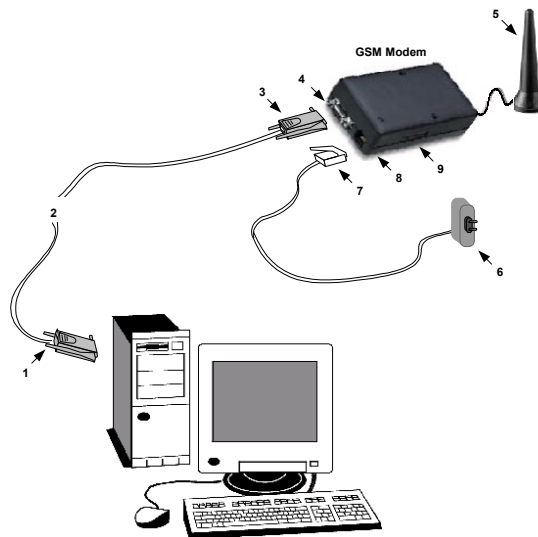


Figure 1. GSM modem kit

GSM Modem

Table 1: Component Identification, Figure 1

#	Description	#	Description
1	RS232 connector	6	Power supply PS-GSM modem (available by separate order)
2	RS232 cable MJ10-22-CS28 (available by separate order)	7	RJ11 connector
3	RS232 connector	8	GSM modem power supply
4	GSM Modem serial port	9	SIM card drawer*
5	GSM antenna		

* To open the SIM card drawer, press the yellow dot next to the drawer with the tip of a pen.

Configuring your PC's modem

1. Start U90 Ladder. Open the PC Modem Configuration box by selecting PC Modem Configuration from the Controller menu.
2. Display the PC Modem Configuration box by selecting M90 OPLC Settings from the Controller menu, then clicking on the Modem Setup button.

Note that the default port setting for internal PC modems is commonly COM 3 or COM 4. Most modems automatically match the parameters of incoming data: baud rate, data bits, parity & stop bits. The U90 Ladder fixed modem settings are: 9600, 8 data bits, no parity, 1 stop bit. You may need to manually change your modem's communication settings to match these.

Using your PC to access a remote M90 via GSM

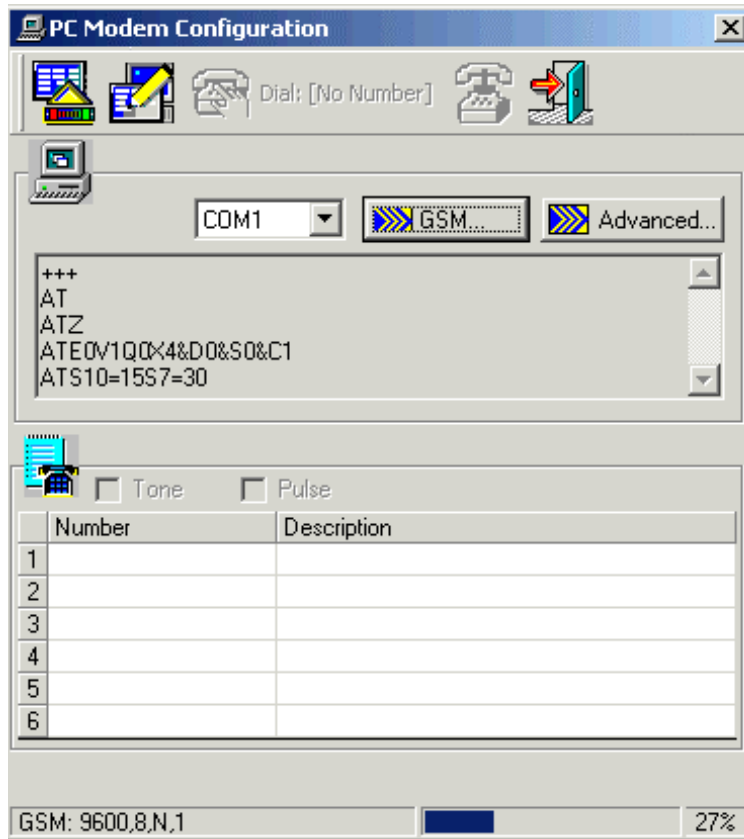


Figure 2. PC Modem Configuration

The default modem initialization commands that appear here are standard for most modems. If your modem requires different commands, you can edit them.

3. To edit initialization commands, click on the Edit Initialization Commands button shown below. The window containing the commands turns white; you can now add, delete or edit commands.

Note that you can restore the default commands by clicking the Default Initialization button.

GSM Modem

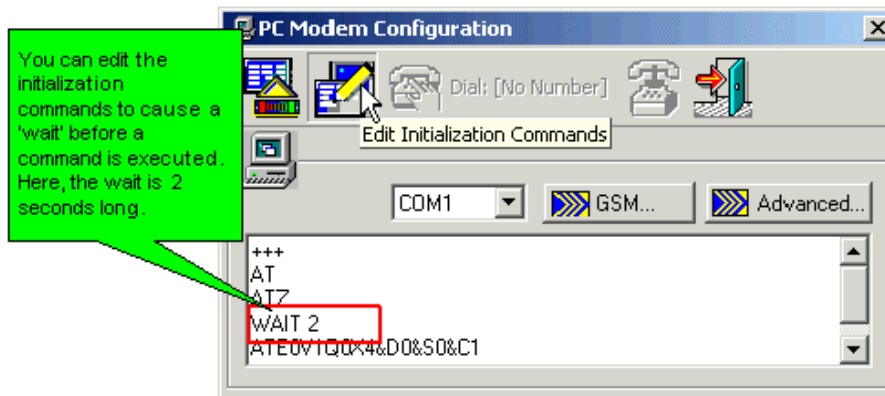


Figure 3. Editing Initialization Commands

GSM Modems

You select a GSM modem by clicking the GSM button, selecting a modem type, and entering a PIN code if necessary.

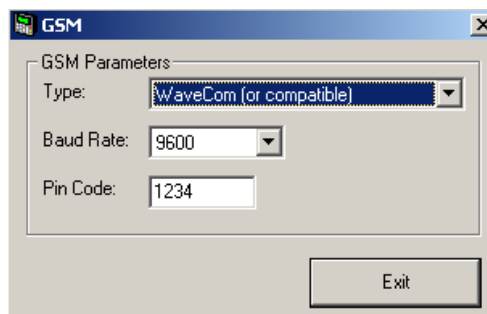


Figure 4. Selecting a GSM modem type

4. Click the Advanced button to edit Time-Out settings.

Using your PC to access a remote M90 via GSM

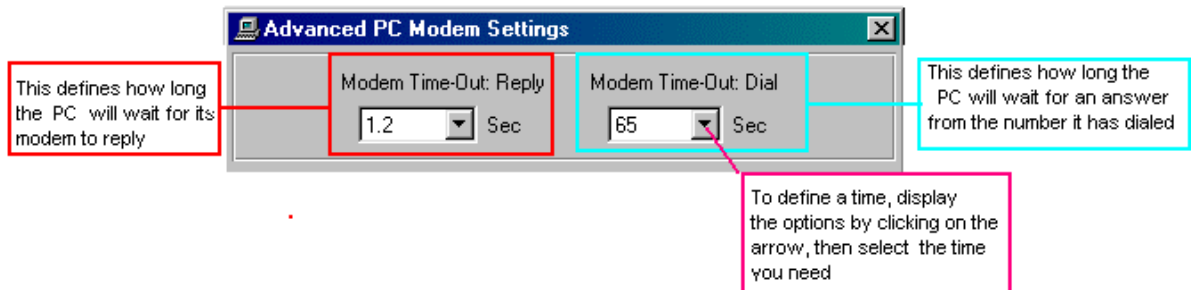


Figure 5. Adjusting Time-out Settings

After you have made these changes, close the PC Modem Configuration box.

5. Open the M90 OPLC box by selecting M90 OPLC from the Controller menu.
6. Click the Advanced button to edit Time-Out settings. Set the M90 OPLC's Time-Out to 2. This should allow sufficient time for PC-to-M90 communications via the GSM modem.
7. To establish communications with a remote M90 OPLC, dial it by highlighting the number you want to dial, and then click on the Dial button as shown below.

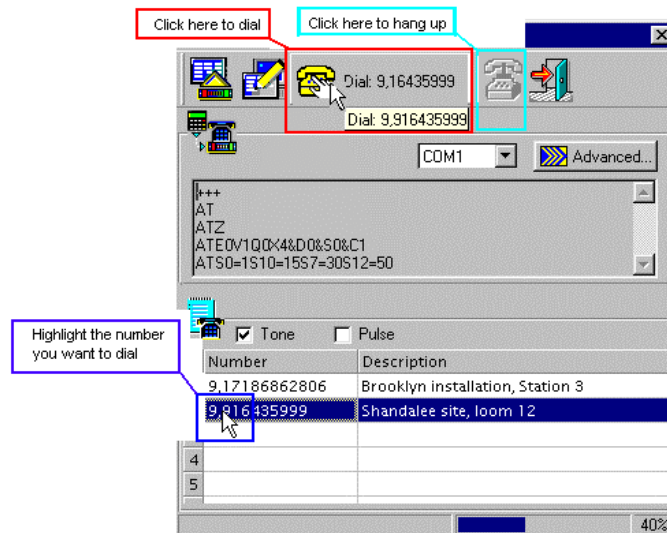


Figure 6.