

# Displaying Variable Data within an HMI display

To display data from an HMI variable within an M90 display, you must:

- Create a field within the display that is long enough to hold the variable data.
- Attach a variable to the field.

## To Create a Field

1. Click your cursor in the display. This is the starting point of the field.
2. To create the field, either:
  - Drag the cursor across the display. The field you create is automatically highlighted in blue.

## OR

- Hold the **SHIFT** key down, and press the right-pointing arrow key (→). Each time you press the arrow key, a space is automatically highlighted in blue.

In the figure below, the display contains a field two spaces long.

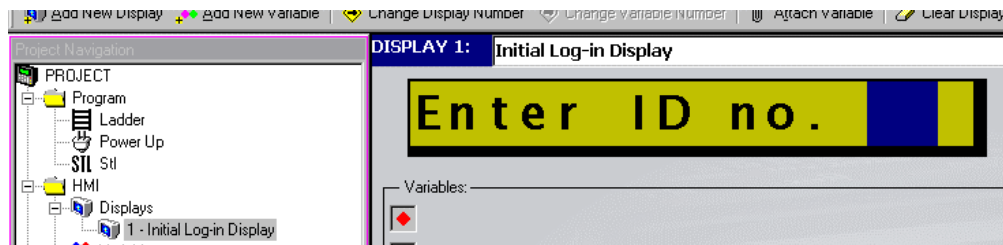


Figure 1. Variable Display Field

## To Attach a Variable

1. Click **Attach Variable** on the HMI toolbar as shown in the figure below.

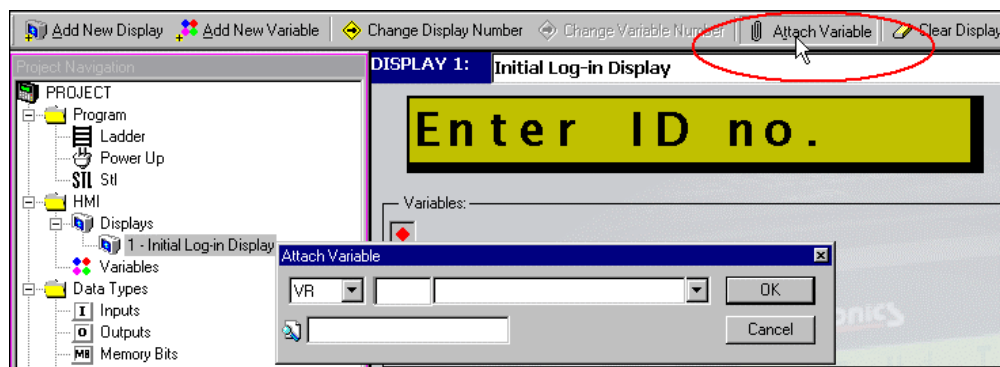


Figure 2. Attach a Variable

2. The Attach Variable dialog box opens as shown below.

3. Enter the number of the desired variable and press OK. If you do not enter a variable number, the program assigns a default variable.

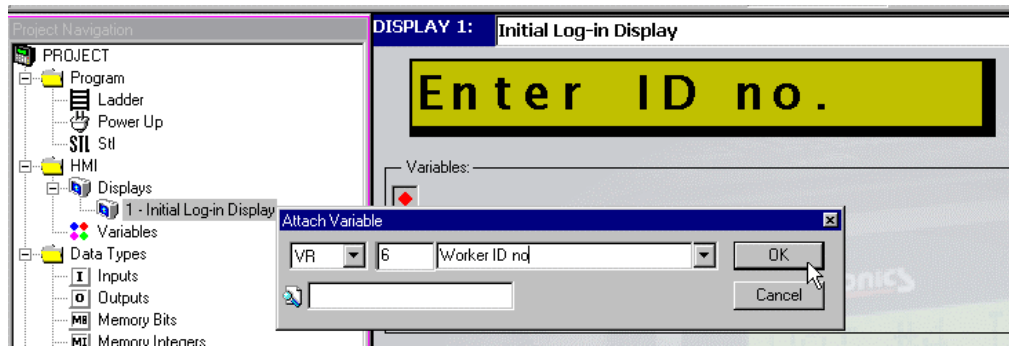


Figure 3. Enter Variable Number and Address

4. The variable-linked spaces now appear as red pound signs, and the variable itself appears in the Variable pane of this Display as shown below.

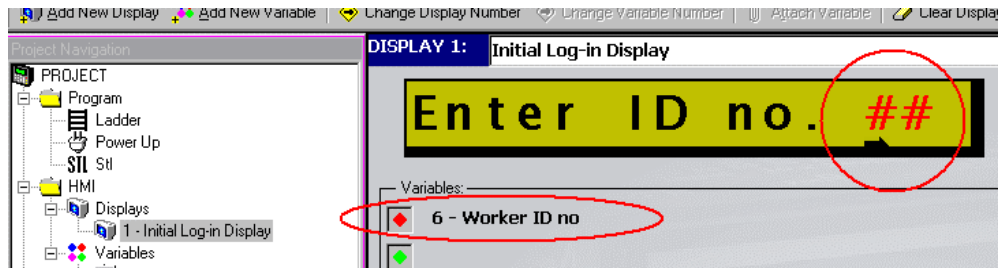


Figure 4. Display 1 with Attached Variable