

How to activate the OPC Tunnel in the PROFIBUS OPC-Server:

The OPC Tunnel of the PROFIBUS OPC Server cannot (yet) be activated with the configuration tool. Therefore you have to make an entry in the registry manually as following:

HKEY_LOCAL_MACHINE\SOFTWARE\Softing\PB OPC Server

Key: TunnelPort

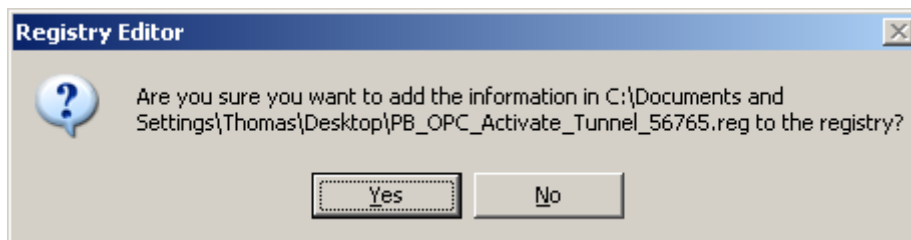
Default = 0 (Tunnel is off)

Default for activation = 56765

In case you will use the default port 56765 you can automatically set the registry by double clicking on the file

PB_OPC_Activate_Tunnel_56765.reg.

The notice of the registry has to be approved with "Yes".



Afterwards you have to restart the system.

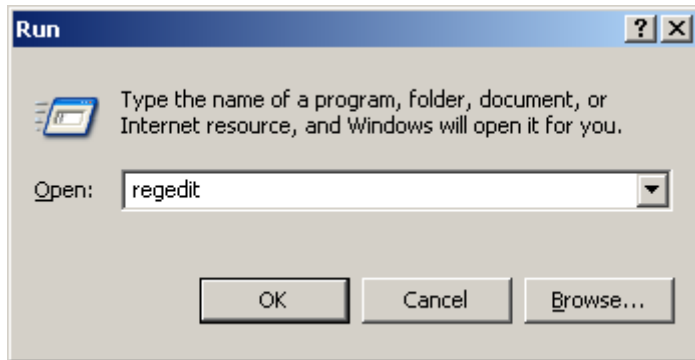
The file PB_OPC_Activate_Tunnel_56765.reg can easily be created: in an optional text editor you have to copy the following three lines and save them with any file name with the ending .reg.

Windows Registry Editor Version 5.00

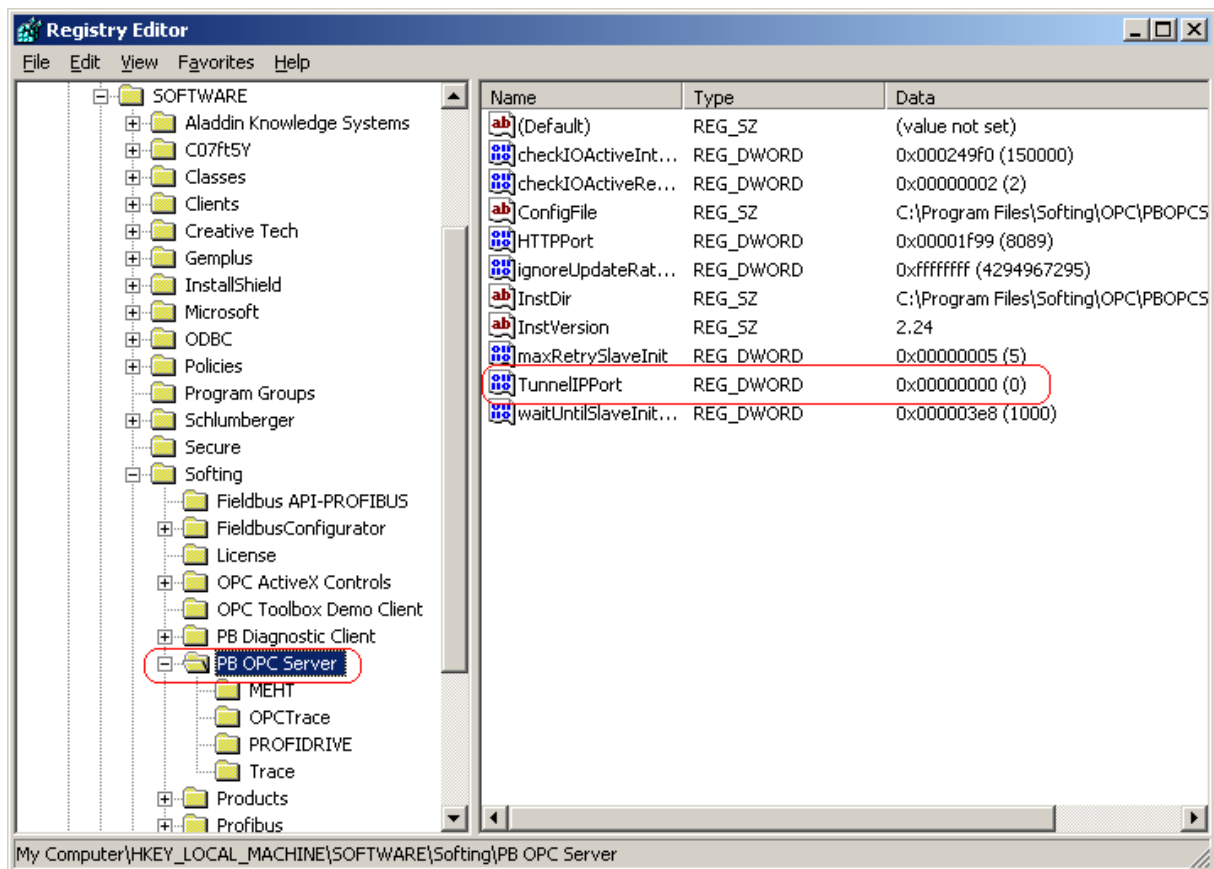
```
[HKEY_LOCAL_MACHINE\SOFTWARE\Softing\PB OPC Server]
"TunnelPort"=dword:0000d6bd
```

If you want to use another port than 56765 you can also enter the value into the registry manually.

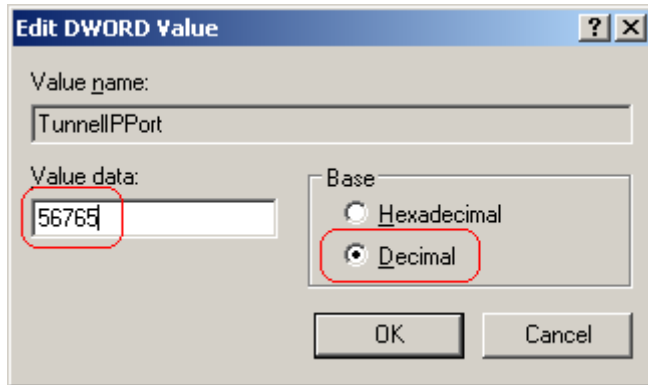
Start Regedit:



Go to the Key HkeyLocal_Machine\Software\Softing\PB OPC Server and double-click at TunnelIPPort



Convert to decimal and enter the required port address (default is 56765)



Confirm with OK, close the registry editor and restart the system.

efesotomasyon.com
