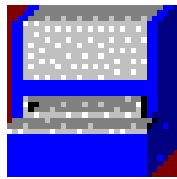


efesotomasyon.com

KARDEX VCA



VERTICAL CAROUSEL

PLC Upload

USERS GUIDE

ISSUE DATE: June 2002

TABLE OF CONTENTS

PART 1 - SETUP

1	INTRODUCTION.....	3
2	INSTALL PLC UPLOAD.....	3
2.1	RUN PLC UPLOAD SETUP PROGRAM.....	4
3	SETUP PLC UPLOAD.....	5
3.1	CONFIGURATION.....	5
3.1.1	SET PLC PROGRAM FILE.....	5
3.2	SET COMMUNICATION PORT.....	6
4	BACK UP RECOMMENDATIONS.....	6

PART 2 - OPERATION

5	OPERATION.....	9
6	PLC UPLOAD TROUBLESHOOTING.....	10
6.1	ERROR CONNECTING TO PLC.....	10
6.2	FURTHER PROBLEMS.....	10

Valid for PLC Upload Release 1.0.00.20001011

IMPORTANT NOTICE

THE PC SUPPLIED WITH THE CAROUSEL IS AN INTEGRAL PART OF THE CAROUSEL CONTROL SYSTEM

THE PC **SOFTWARE IS CONFIGURED BY KARDEX VCA** AND ITS OPERATION CONFIRMED WITH THE CUSTOMER ON COMPLETION OF THE COMMISSIONING PROCESS

THE **WARRANTY WILL BE VOID** IF THE CUSTOMER OR THEIR REPRESENTATIVE CHANGES, MODIFIES OR MAKES ANY ADDITIONS TO THE HARDWARE AND/OR SOFTWARE OF THE CAROUSEL CONTROL SYSTEM WITHOUT THE WRITTEN PERMISSION OF KARDEX VCA

THE **CUSTOMER IS RESPONSIBLE** FOR THE MAINTENANCE OF ALL **DATA FILES**, INCLUDING BACKUP AND RESTORATION PROCEDURES

PART 1

SETUP

1 INTRODUCTION

Kardex VCA has developed a native Windows utility to upload the SIEMENS S5 PLC programs. PLC Upload will run on all 32 bit Windows Operating Systems including WIN9x, WINNT and WIN2000. In the past, these carousel and Sortbench PLC programs have been uploaded using the SIEMENS AG90 utility. This utility does not function consistently under all Windows environments.

The PLC Upload utility should be installed with all wCARMAN 32 and Sortbench 32 installations.

This description is valid for PLC Upload version 1.0.00.20001011

2 INSTALL PLC UPLOAD

PLC Upload will be delivered via email or on CD. Refer to Section 2.1 for installation details.

The application will be installed as follows:

- PLC Upload application files into the c:\Program Files\Kardex VCA folder.
- PLC program files into c:\Program Files\Kardex VCA\PLC Upload\Programs folder
- Shortcut will be installed in to the Start Menu\Programs\Kardex VCA folder.

When the PLC Upload installation is run, it will search the PC harddisk for existing < >.s5d PLC programs. It will search the following directories:

- C:\CAR\S5
- C:\S5

Standard CARMAN v5 or v7 installations will have the PLC program files located in one of these directories. If an S5 directory is found on the PC, the set up routine will copy these files into the 'Programs' subdirectory which is created during installation. If no S5 subdirectory is found, the programs provided with the set up files will be installed.

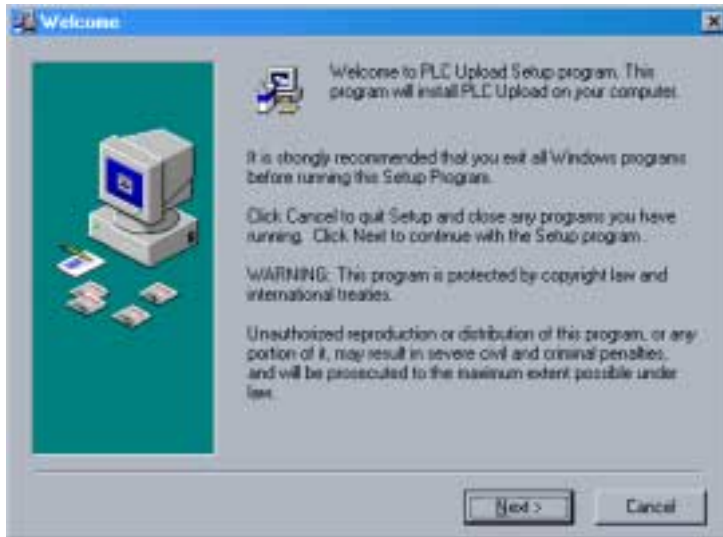
NOTE: If you see an S5 directory in the carousel PC which is not positioned as noted above, you should copy the < >.s5d files located in the directory to the ..PLC Upload\Programs subdirectory.

If you are installing this application as part of a wCARMAN 32 upgrade, it is imperative that you retain the PLC files from your previous CARMAN installation as these files will relate specifically to your carousel equipment.

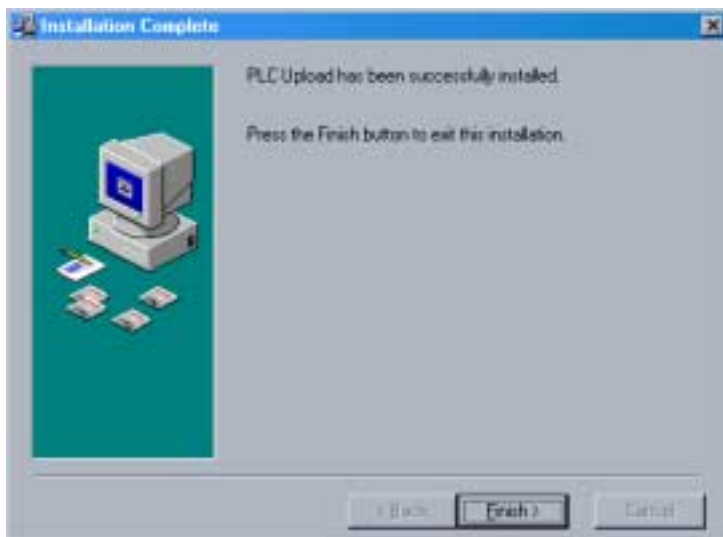
2.1 Run PLC Upload Setup Program

Install the PLC Upload utility using the Run dialog available from the Windows Start Menu. The set up file is called 'PLC Upload Setup.EXE'.

First the setup program displays the Welcome! screen and waits for confirmation to begin the installation process. You can confirm by pressing **Enter** when the Next button is selected or pressing **Alt & N** for Next.



When the setup program has been completed, the Installation Completed! screen will ask for confirmation. You can confirm by pressing **Enter** on the Finish button or pressing **Alt & F** for Finish.



PLC Upload can be started from the the shortcut in the 'Start Menu\Programs\Kardex VCA' folder.

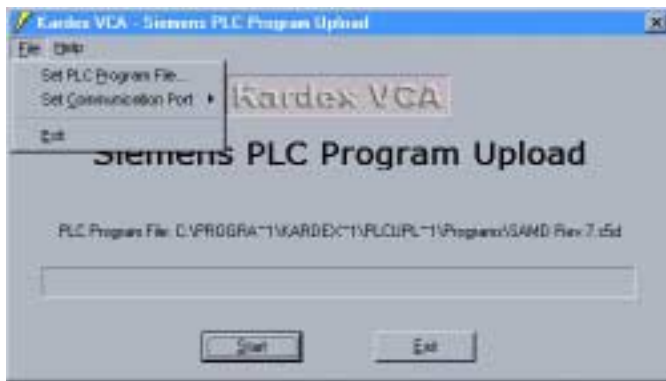
PLC Upload can be uninstalled using the standard Windows Add/Remove program routine, located in the Control Panel.

3 SETUP PLC UPLOAD

3.1 Configuration

Start the PLC Upload application by activating the PLC Upload shortcut in the Start Menu\Programs\Kardex VCA folder.

The required PLC program and COM port must be set for PLC Upload to work correctly. These parameters are selected from the File menu.



3.1.1 Set PLC Program File

The selected PLC program will be displayed above the progress bar on the form. If this is not the correct program for your carousel, select the correct program as follows:

- From the File menu, select the 'Set PLC Program File...' option. The standard Windows file selection dialog box will be displayed.
- Select the PLC file that is required for your carousel or Sortbench.

Carousel Systems

Machine Configuration

Single Access Manual Door
 Single Access Auto Door
 Single Access Variable Door
 Dual Access Manual Door
 Dual Access Auto Door
 Dual Access Double Auto Door

CARMAN Installation

[SAPLC@st.s5d](#)
 SAAD@@st.s5d
 SAVD@@st.s5d
[DAPLC@st.s5d](#)
 DAAD@@st.s5d
 DADD@@st.s5d

Filename

wCARMAN 32 Installation

SAMD Rev.x.s5d
 SAAD Rev.x.s5d
 SAVD Rev.x.s5d
 DAMD Rev.x.s5d
 DAAD Rev.x.s5d
 DADD Rev.x.s5d

Sortbench Systems

Configuration

10 Station
 20 Station

SBC Installation

[SORT15st.s5d](#)
 SORT31st.s5d

Filename

Sortbench 32 Installation

SORT15 Rev.x.s5d
 SORT31 Rev.x.s5d

3.2 Set Communication Port

PLC Upload will default to COM1 for communication to the PLC. If your application is not using COM1, you will need to select the correct COM port:



Once you have selected the correct PLC program file and selected the correct COM port, you are ready to upload the program.

4 BACK UP RECOMMENDATIONS

If you are upgrading from CARMAN v5 or v7, Kardex VCA recommend that you take a once off backup of the PLC program files (filename *.s5d). In the event of failure of your carousel PC, you will be able to rebuild your installation with these files plus the PLC Upload setup files.

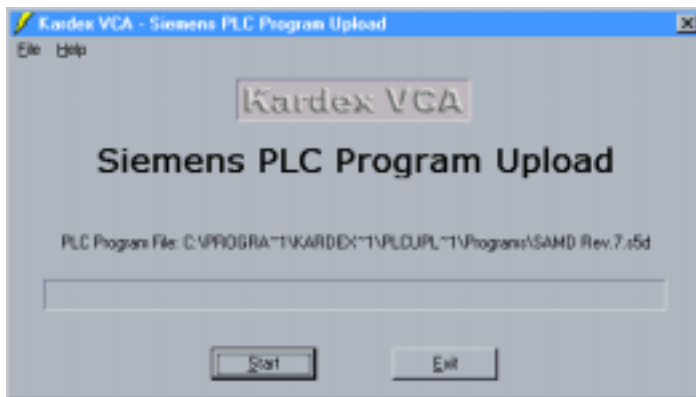
PART 2

OPERATION

5 OPERATION

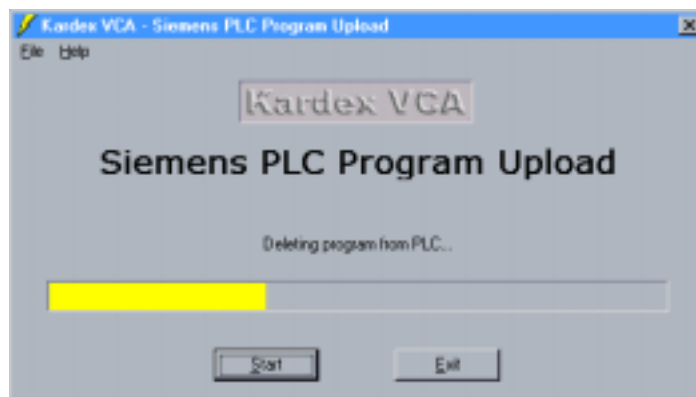
NOTE: DO NOT DOWNLOAD A NEW PLC PROGRAM UNLESS YOU HAVE HAD A PROBLEM WITH THE EXISTING PLC PROGRAM.

Start the PLC Upload application by activating the PLC Upload shortcut in the Start Menu\Programs\Kardex VCA folder.



The selected PLC program will be displayed above the progress bar on the form.

Start the PLC upload by selecting Start. The status of each download activity will be indicated by a bargraph and text description on the main form.



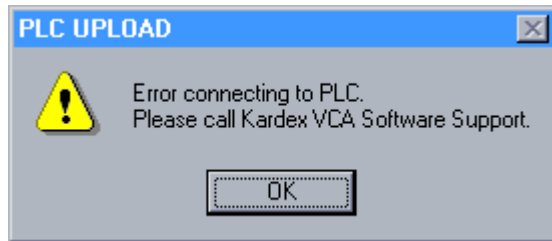
PLC Upload will close when the upload is complete.

6 PLC UPLOAD TROUBLESHOOTING

If problems are encountered during the upload process, the application will report errors.

6.1 Error connecting to PLC

If the PLC Upload application cannot connect to the PLC, the following message will be displayed.



Repair: You should check your cabling and COM port selection. If you cannot get connection to the PLC, please contact Kardex VCA for assistance.

6.2 Further Problems

In most cases, problems that occur with PLC Upload can be easily fixed by your own IT people. However if there is a problem that can not be solved, call our friendly IT support team:

Software Support Team
Wodonga Office Australia
Phone: +61 (02) 6056 1202
Fax: +61 (02) 6056 2422
Email: Software@kvca.com.au

efesotomasyon.com