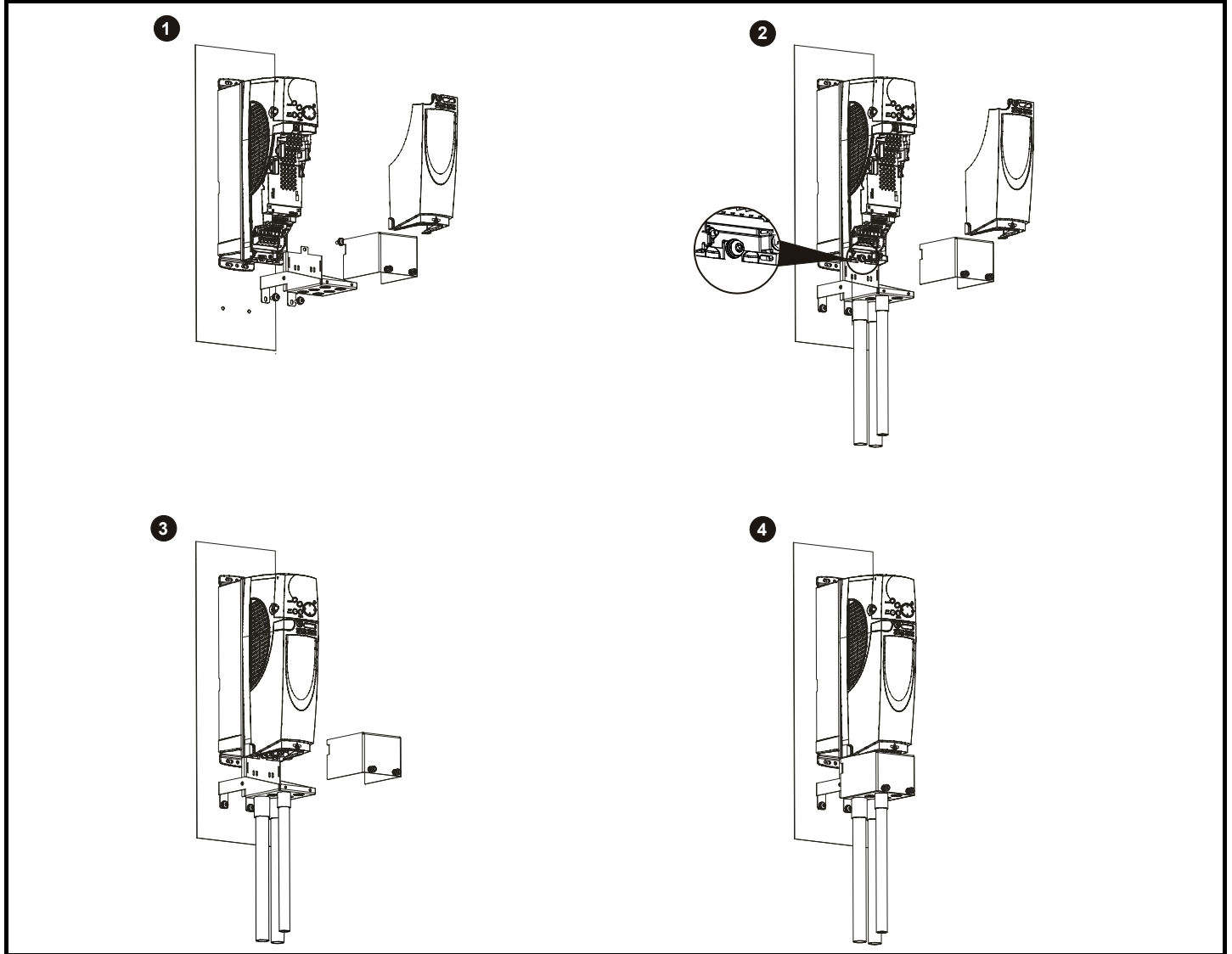




Sizes 1 & 2 UL Type 1 Conduit Connection Boxes for Unidrive SP, Affinity, Commander SK/HSK and Commander GP20

1 Conduit connection box installation

Figure 1 Typical installations for sizes 1 & 2 conduit connection boxes



NOTE

In stage 2 of the installation, the conduit connection box must be bolted to the drive heatsink to create a good ground connection.

Weight

Drive	(Size 1 except 1405/1406)	5kg (11.0lb)
	(1405/1406)	5.8kg (12.8lb)
	(Size 2)	7kg (15.4lb)
Conduit box	Size 1	0.8kg (1.8lb)
	Size 2	1.0kg (2.2lb)



Figure 2 Dimensions of size 1 drive with conduit connection box fitted

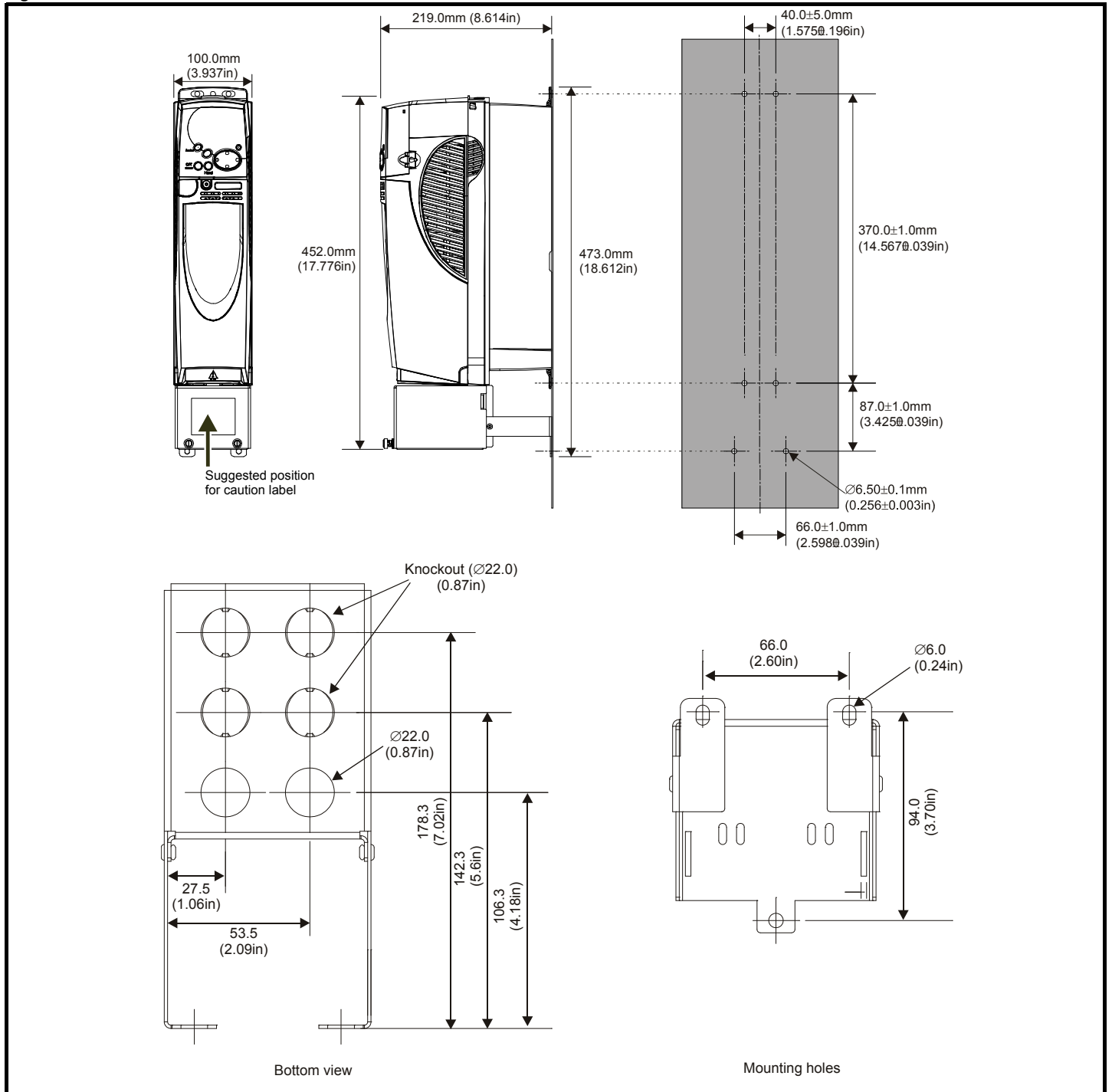
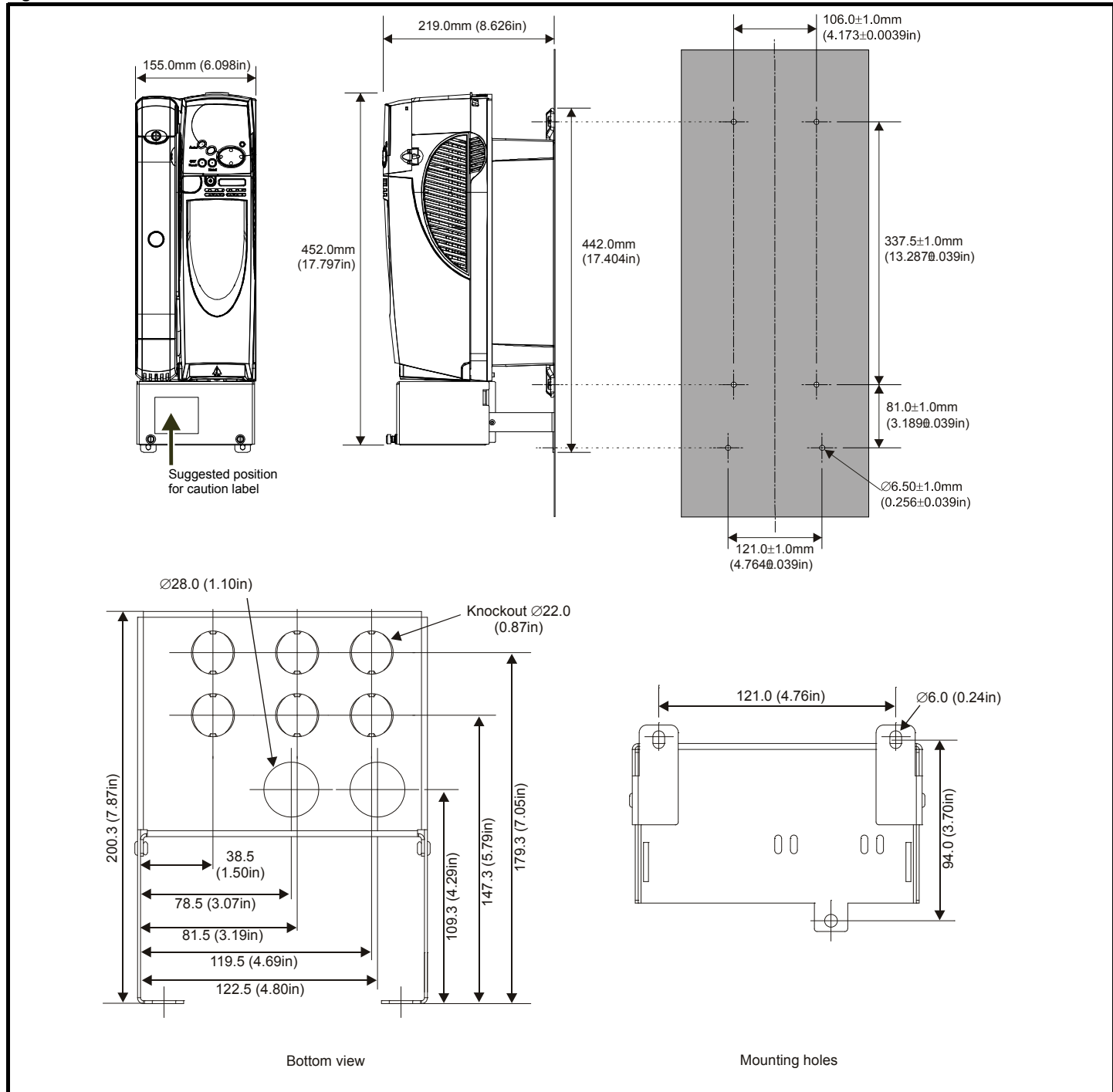


Figure 3 Dimensions of size 2 drive with conduit connection box fitted



2 Instructions for complying to UL Type 1

Size 1 & 2 Affinity drives conform to UL type 1 as standard without the need for conduit connection boxes to be installed. If the Affinity drive is surface or wall mounted, then a bottom conduit connection box is required for power and control cable connections.

The other surface or wall mounted drives (SP/GP20/SK/HSK), can be adapted to conform to UL Type 1 through the addition of Control Techniques Ltd approved conduit connection boxes and caution labels manufactured by Control Techniques Ltd. The following instructions must be complied with to achieve compliance to UL Type 1 for SP/GP20/SK/HSK drives.

1. The conduit connection box must be installed to the drives (refer to Figure 1, Figure 2 and Figure 3).
2. The caution label (Control Techniques Ltd part number: 3661-0045-01) must be fitted to the front of the drive so that it is clearly visible to the end user. The suggested position is on the conduit connection box as shown in Figure 2 and Figure 3. It should not cover any existing labels or markings.
3. There should be sufficient spacing between the drives to allow the label on the side of the conduit connection box to be visible.
4. Unused cable entry holes must be blanked off with suitable grommets. Grommets should be approved to meet a minimum rating of UL94 V-0 flammability rating.

NOTE

If any of the above instructions are not complied with, the drive will not meet the requirements of the UL Type 1.