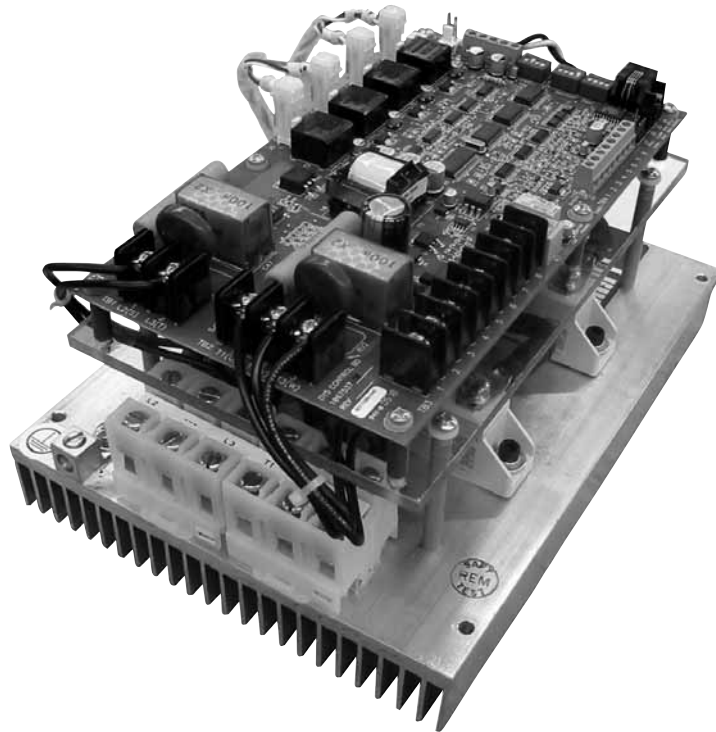


DY5

Solid State AC Induction Motor Brakes

DRIVES FOR EVERY INDUSTRY



THINK SAFETY!

PUT THE BRAKES ON MOTOR COASTING OF

Saws, Chippers, Slicing Machinery, Machinery with Blades
Grinders, Mixers, Turning Machines, Milling Machines
Conveyors, Feeders, Shakers, Punch Presses

DY5

TO STOP AC MOTORS SAFELY AND QUICKLY

*NOTE: (1) Not intended for replacement of other machine safety devices.
(2) Mechanical brake still required for applications that need holding.
(3) DY4 becomes deactivated with loss of power.*



SAFTRONICS
www.saftronics.com

5580 Enterprise Parkway
Fort Myers, FL 33905
Phone (239) 693-7200
Fax (239) 693-2431
www.saftronics.com

Solid State AC Induction Motor Brakes

DY5 brakes can be applied to most full voltage electromechanical starters and solid state softstarts, and can be ordered as an installed option on any SAFTRONICS Softstart. Electronic indication should never be used as the only indication that it is safe to proceed. Zero speed should be mechanically or visually verified and the machine locked out before proceeding with any operation in which movement of the machine would pose a risk.

ADJUSTMENTS

- Braking Current: 40-200% Brake Rating
- Backup Timer: 1-255 seconds via DIP switch
- Zero speed hold time: 0.5-7.5 seconds (delays release of brake after zero speed is sensed) via DIP switch

DIMENSIONS

SIZE	DIMENSIONS	CHASSIS	NEMA 12
15 & 40	H x W x D In.	9.5 x 6.25 x 5.25	16 x 14 x 12
	H x W x D mm	241 x 159 x 133	406 x 356 x 254
	Lbs. kg	7 Lbs. 2.3 kg	32 Lbs. 14.5 kg
75	H x W x D In.	10 x 7.5 x 6	16 x 14 x 12
	H x W x D mm	254 x 190 x 152	406 x 356 x 254
	Lbs. kg	8 Lbs. 3.6 kg	33 Lbs. 15.5 kg
125 & 180	H x W x D In.	13 x 7.5 x 7	24 x 20 x 12
	H x W x D mm	330 x 190 x 178	609 x 508 x 305
	Lbs. kg	17 Lbs. 7.7 kg	72 Lbs. 32.7 kg
480	H x W x D In.	15.25 x 14 x 10	30 x 24 x 16
	H x W x D mm	387 x 356 x 254	762 x 609 x 406
	Lbs. kg	35 lbs. 15.9 kg	115 Lbs. 52.2 kg
720	H x W x D In.	20 x 17 x 12.5	36 x 30 x 16
	H x W x D mm	508 x 432 x 317	914 x 762 x 406
	Lbs. kg	54 lbs. 24.5 kg	175 Lbs. 80 kg

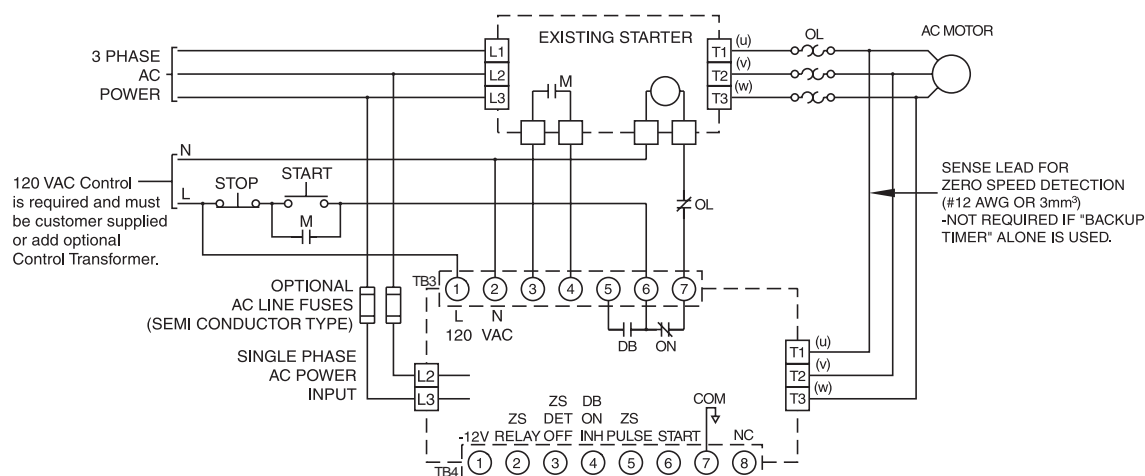
SPECIFICATIONS

Power ranges	3-700 HP (2.2 - 500 kW)
Line Voltage	200-600 VAC
Line Frequency	45-65 Hz
Ambient Temperature	10-40°C (operating)
Control Voltage	120 VAC 45-65 Hz (50VA)
Overload Capacity	200% for 60 seconds
"Brake ON" Relay	Form C contact rated 5A 220 VAC
Zero Speed Output	Open Collector 24 VDC 50 mA
Zero Speed Pulse	Open Collector 24 VDC 50 mA

HORSEPOWER RATINGS (GENERAL PURPOSE)

MODEL	HP RATING				
	208V	230V	380/415V	460V	575V
DY5 - 15	3	5	7.5	10	15
DY5 - 40	10	15	25	30	40
DY5 - 75	20	25	50	50	75
DY5 - 125	40	50	75	100	125
DY5 - 180	60	75	125	150	200
DY5 - 480	150	200	350	400	500
DY5 - 720	250	300	500	600	700

CONNECTION DIAGRAM



P/N: 027-3064
Rev: 09/2005